

W E L C O M E H O M E

*Superior  
Style*



*Everyday  
Comforts*

m a n s u r a



3000 SERIES

[www.moduline.ca](http://www.moduline.ca)

# STANDARD MODULINE FEATURES & SPECIFICATIONS

## GENERAL CONSTRUCTION

- 8' Ceilings
- Cathedral ceiling in living, dining area, and kitchen
- Maintenance free vinyl lap siding and metal fascia
- 18" Extended Eaves (All 4 sides)
- Fiberglass shingle roof (25 year)
- 7/16" roof sheathing
- Engineered 4/12 hinged roof trusses
- Textured (primed) gyproc ceiling
- Exterior walls built 2"x6" @ 16" o.c strengthened with 3/8" OSB sheathing on inside and outside of wall
- 5/8" T & G OSB Floor Decking glued and screwed
- 2"x8" Floor joists @ 16" o.c. on 28' wides
- 2"x10" Floor joists @ 16" o.c. on 30'/32'/40' wides
- Heavy tubular steel frame
- Decorative insulated entry doors with dead bolt and peephole (36" front door)
- Coach lights at all exterior entrances
- Screen doors on front and rear entrances
- Residential maintenance free Low E PVC windows c/w vinyl sills, screens and security locks
- Exterior GFI electrical outlet and frost free water tap
- Insulation meets or exceeds codes Floors R-20, Walls R-20 & Ceilings R-40 (min)
- \*Insulation plus package is a forced option on all BC homes

## TASTEFUL INTERIORS

- Plush saxony carpet in living room, great room, family room, den, hall and all bedrooms (certain models)
- Quality cushioned linoleum flooring all other areas
- Coordinating window valance over 2" white faux wood blinds (inset in window) in all areas except bathrooms
- Pre-finished interior passage doors

## BRIGHT, BEAUTIFUL KITCHENS

- Deluxe tile backsplash
- Window over kitchen sink (most models)
- High Bar Kitchen Island (select models)
- Deluxe 30" electric range
- Exterior vented range hood with light
- 19 cubic foot, 2-door, frost free refrigerator
- Double stainless steel sink
- Spacious pantry (selected model)
- Doweled, full modular cabinetry w/crown moulding
- Three distinctive colors of cabinet doors to choose from

## SPACIOUS BATHS

- One-piece quality fiberglass tub and shower units
- Curved Shower rods in all tubs
- Expansive vanity mirrors with Theatrical light
- Deluxe tile backsplash
- GFI receptacle
- Power bath fan(s)
- Single lever faucet on tub/shower unit
- 36" vanity height in ensuite

## UTILITY SERVICES

- 100 amp electrical panel
- High efficiency (90+AFUE) gas furnace with condensation pump
- 33 Imp. (40 US) gallon natural gas water heater
- Wired, plumbed and vented for washer and dryer
- Shelf above washer and dryer
- Primary exhaust fan c/w dehumidistat
- CO/Smoke Detector(s) c/w battery backup
- Dedicated GFI breaker and receptacle for heat tape
- Dedicated receptacle in "Freezer Area"
- Communication outlet (2) – kitchen & master bedroom

# CHOOSE THE OPTIONS IN YOUR NEW HOME

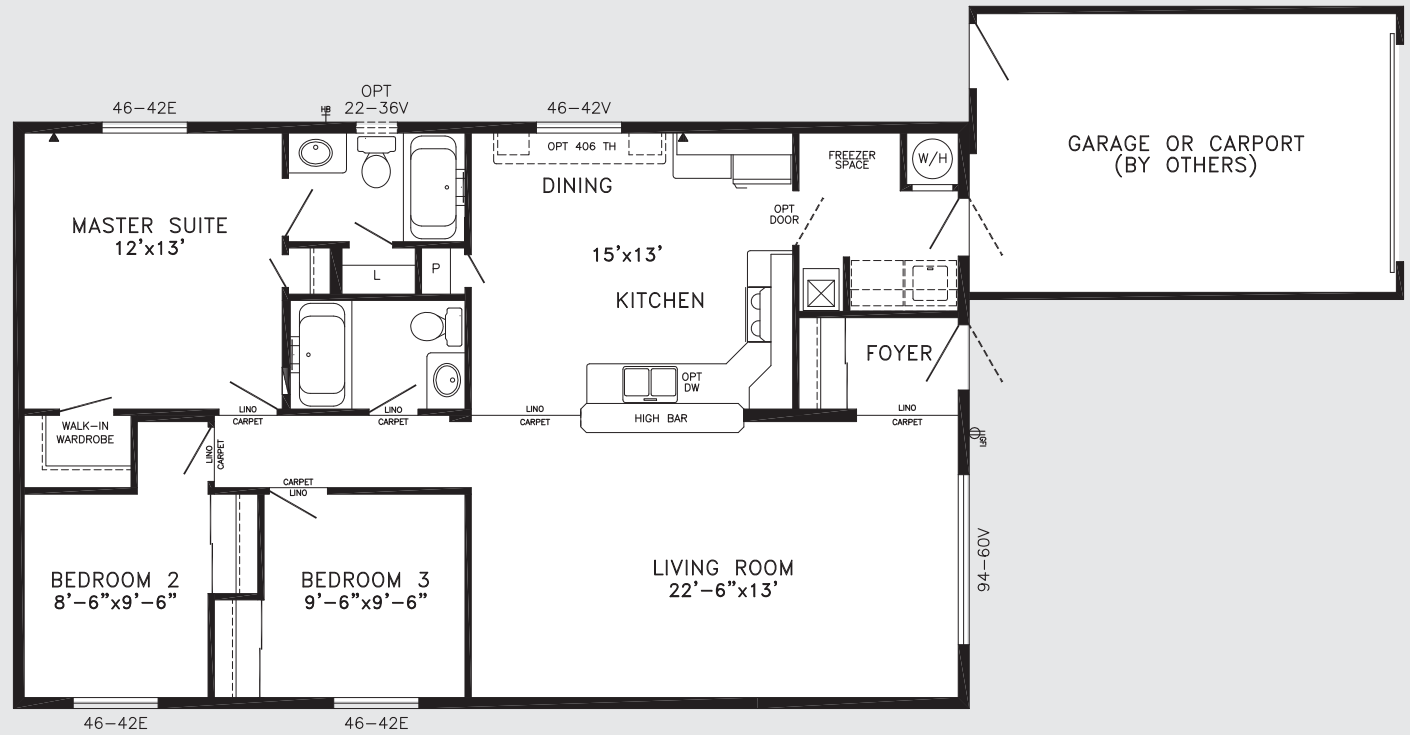
## POPULAR OPTIONAL FEATURES

- Upgrade exterior
- Architectural shingles
- 4/12 Hinged Roof (multi)
- Insulation Plus package
- Door chime
- Painted wood fascia
- Dormer
- 9 Light exterior door
- 15 Light exterior door
- Oval insert door
- Patio door
- Garden door
- French door
- Santa Fe doors
- White lattice windows
- Skylight
- Acrylic block window
- Bay window
- Buffet and hutch
- Wine rack
- Kitchen island
- Computer centre
- Linen/pantry closet
- Freezer cabinet
- Washer/Dryer cabinet
- Bank of drawers
- Microwave shelf
- TV armoire
- Stainless steel soak sink
- Wrap around hutch
- Closet organizer
- Ceiling fan with lights
- Track light
- Deluxe dining light
- Decora switches
- Lazy susan
- Single lever faucet
- Pot and pan drawers
- Hardwood edging
- Appliance garage
- Cleaners drawer
- Soap tray
- Stepped cabinets
- Jetted tub
- Oval tub
- Banjo vanity
- 32" Shower
- Neo angle shower
- Deluxe moulding
- White moulding
- Self clean oven
- Microwave
- Built in dishwasher
- Built in vacuum
- Washer and dryer
- 9cf Freezer
- Fireplace
- Garage ready
- A/C ready
- Pendant lighting
- Under cabinet halogen lighting
- Transom windows

*These are just some of the great options available.  
Please see your local retailer for more information on ordering your new home.*

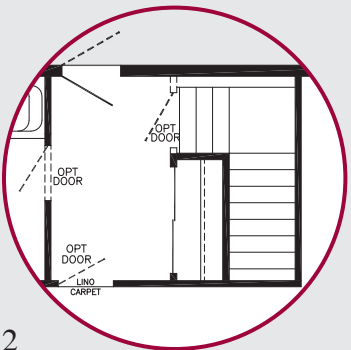
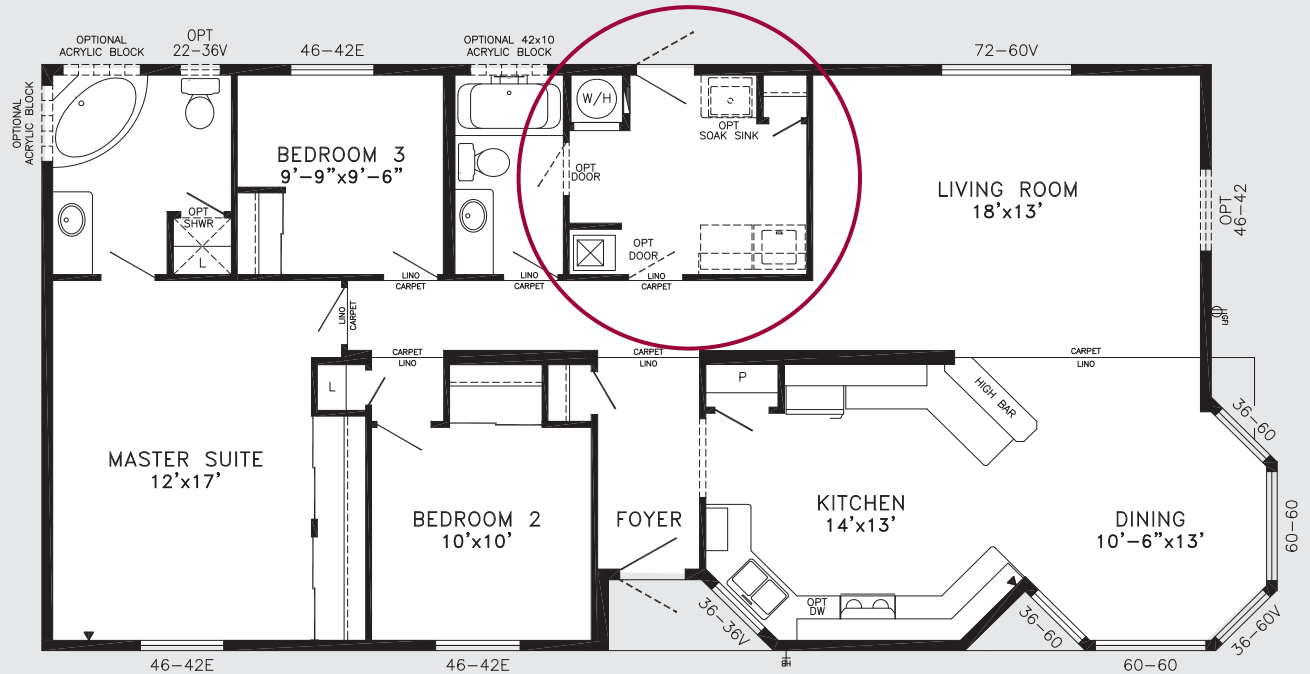
*Queenston* Model 28132

27 x 44 • 1188 sq. ft.



*Montclair* Model 28138

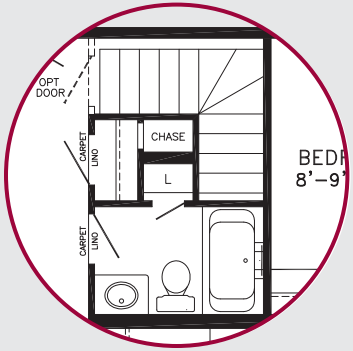
27 x 54/56 • 1493 sq. ft.



*Pasadena*

Model 28139

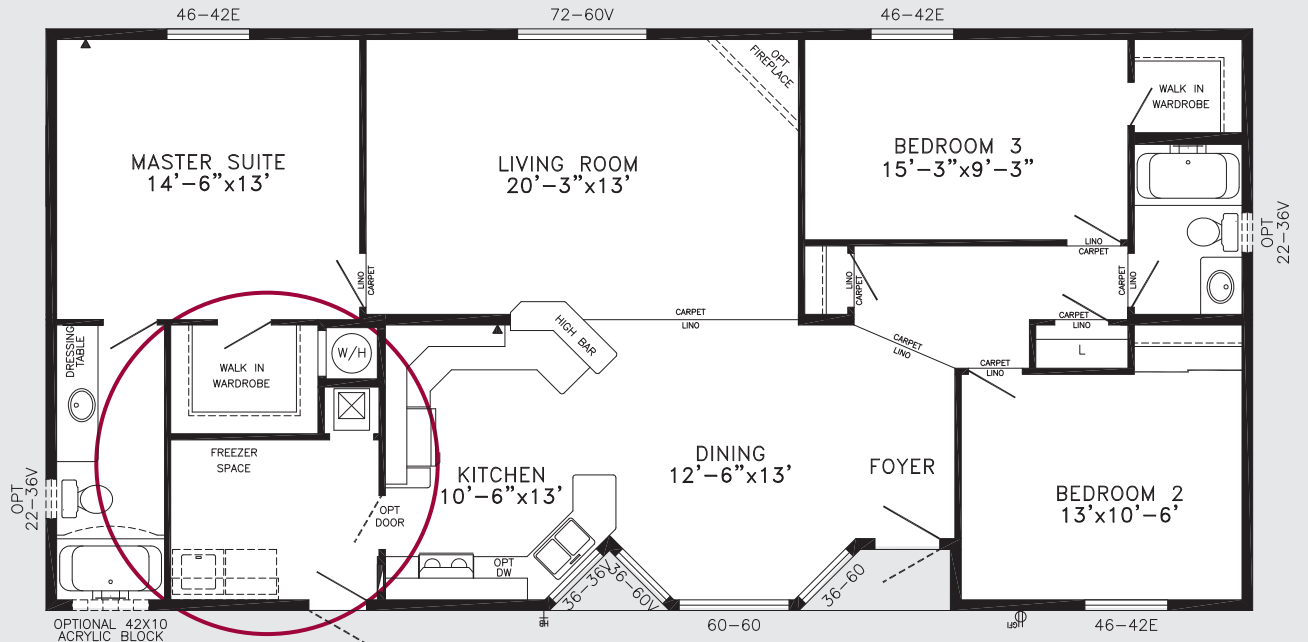
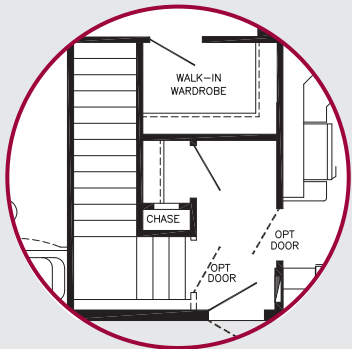
27 x 56 • 1512 sq. ft.



*Preston*

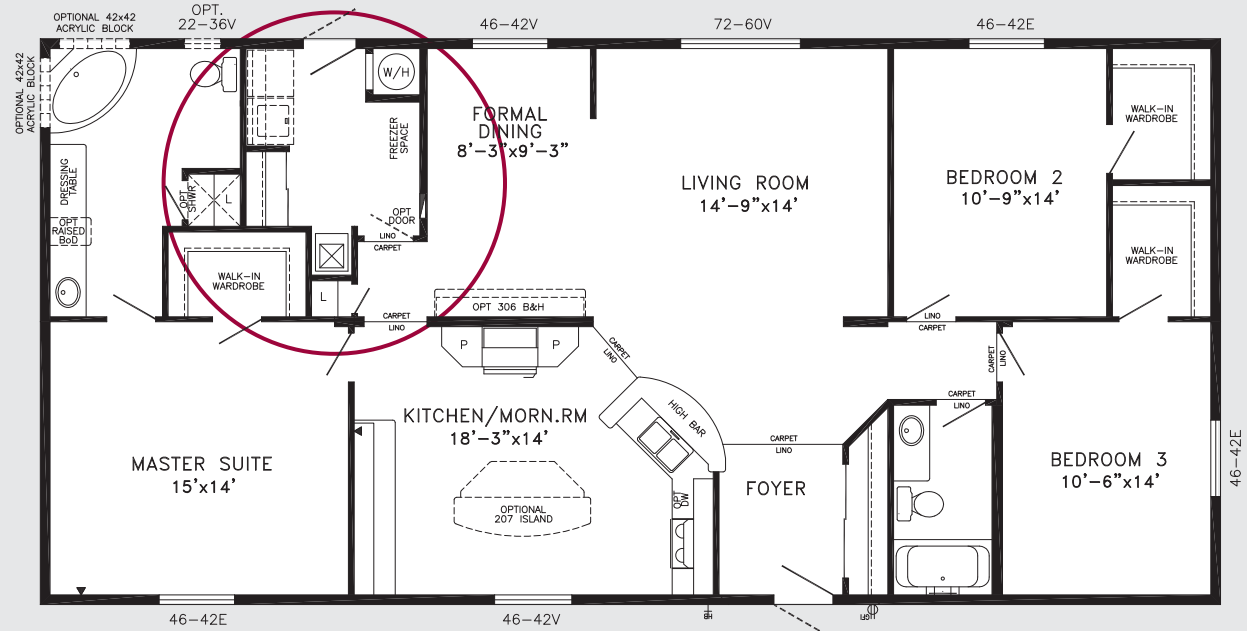
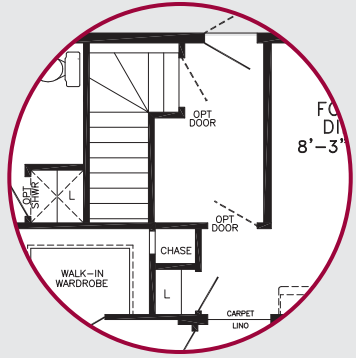
Model 28140

27 x 56 • 1512 sq. ft.



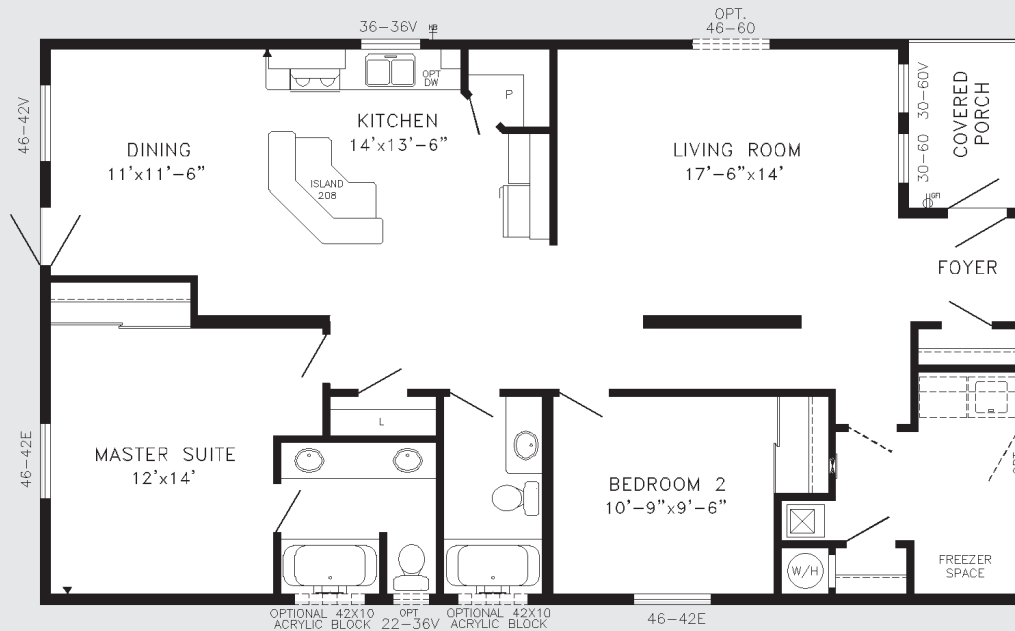
*Oakhurst* Model 30280

29 x 60 • 1740 sq. ft.



*Kitsalino* Model 30610

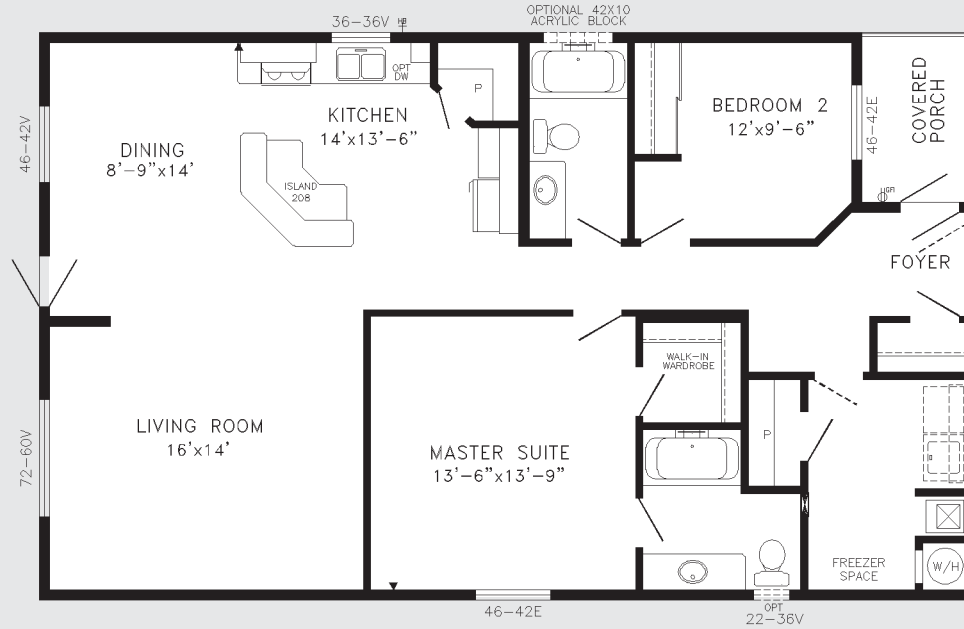
29 x 50 • 1450 sq. ft.



*Marpole*

Model 30611

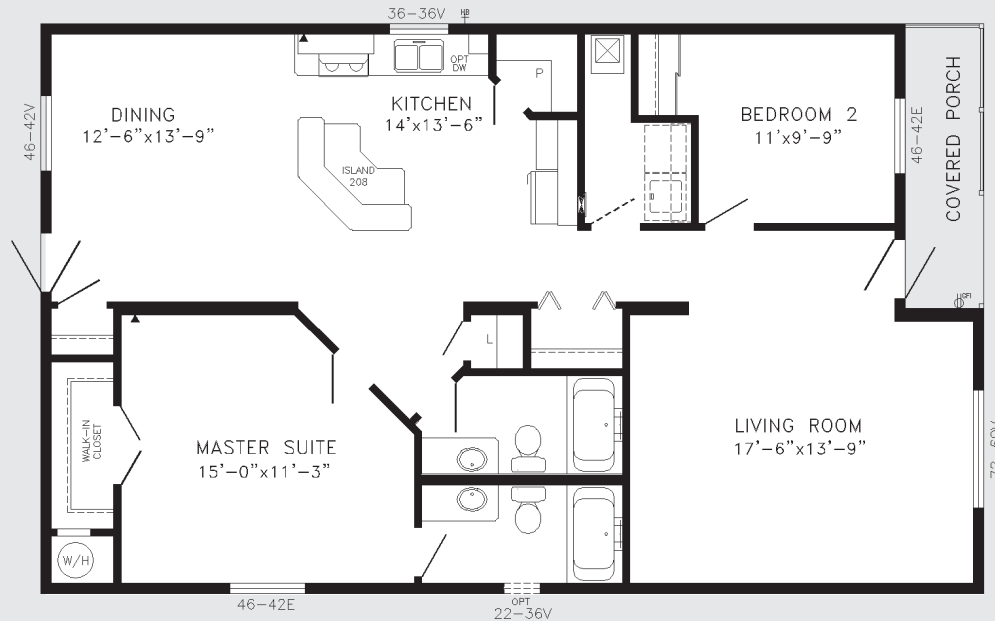
29 x 48 • 1392 sq. ft.



*Townsend*

Model 30612

29 x 48 • 1392 sq. ft.

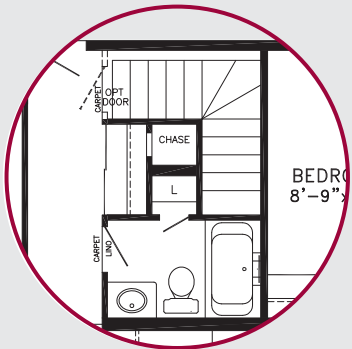






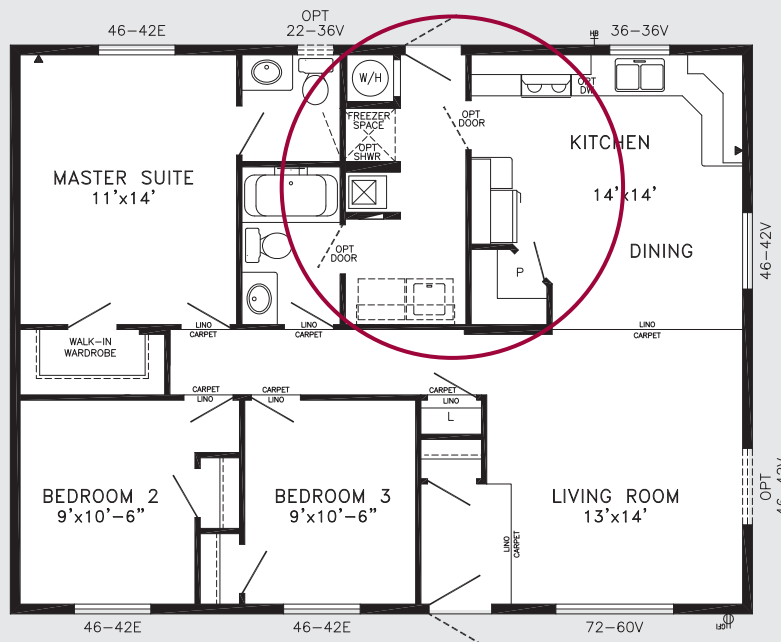
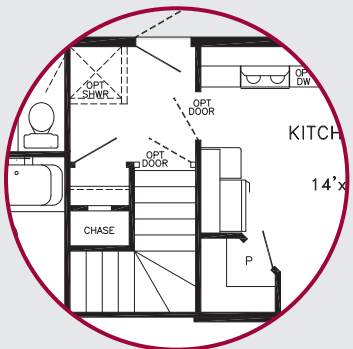
*Sterling* Model 30691

29 x 56 • 1624 sq. ft.



*Saratoga* Model 30692TS

29 x 38 • 1102 sq. ft.

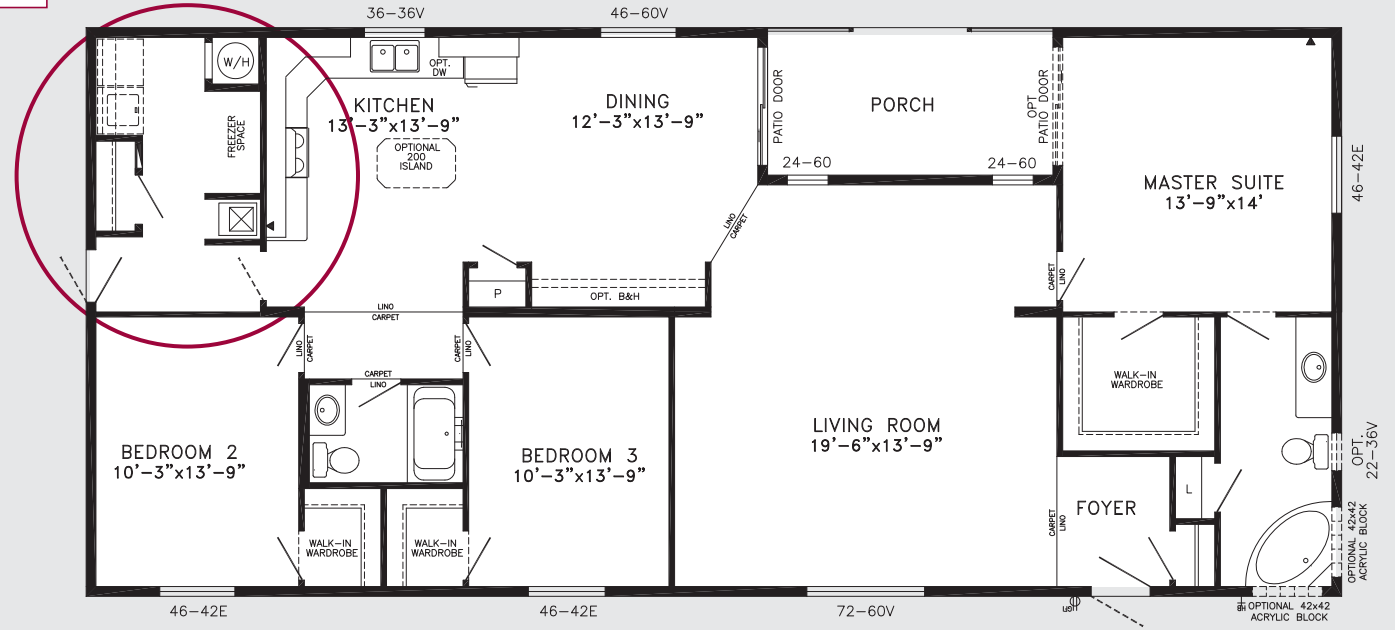
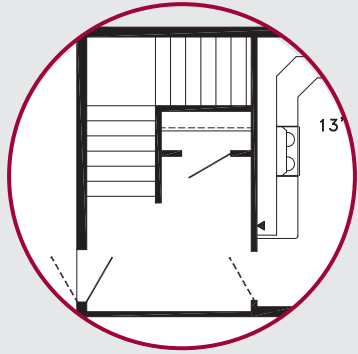


TOP 10 FAVOURITE HOME PLAN

# Ridge Manor

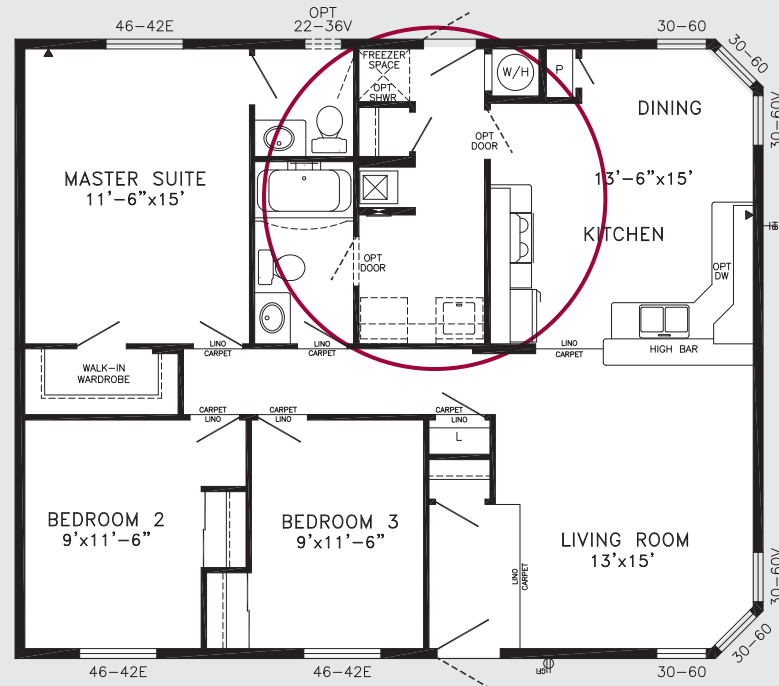
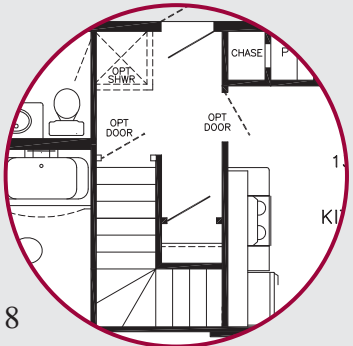
Model 30695

29 x 64 • 1856 sq. ft.



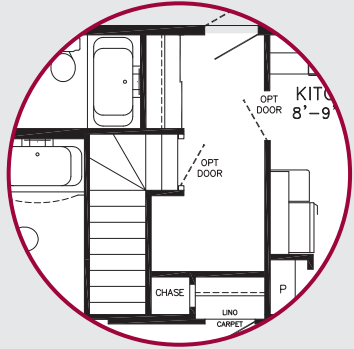
# Rockdale Model 32403TS

32 x 38 • 1216 sq. ft.



*Roseburg* Model 32404TS

32 x 38 • 1216 sq. ft.



*Notes*

---

---

---

---

---

---

---

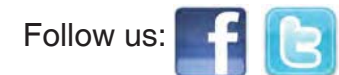
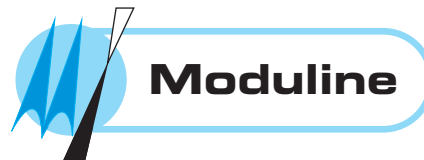
---

---

---



[www.moduline.ca](http://www.moduline.ca)



1421 Brier Park Crescent, Medicine Hat, Alberta T1C 1T8 Phone: (403) 527-1555 Fax: (403) 528-4486

*In a continued effort to meet the challenges of product improvement, we reserve the right to modify plans, specifications and features without prior notice. Some homes may show optional items which are not standard. Please consult your dealer representative for details. Square footage and room sizes are approximate.*